

# ANC-120e USB to DH+ Adapter

## RSLinx Classic Configuration

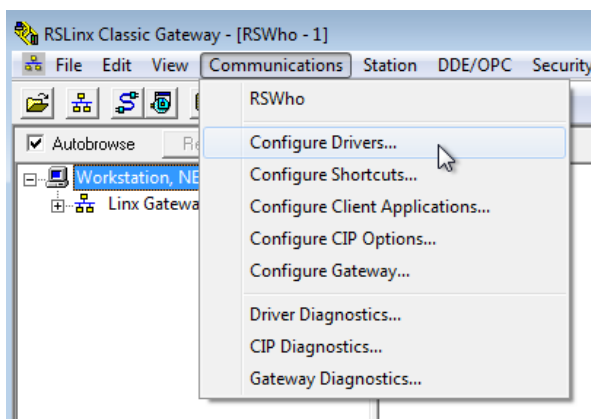
---

*This document provides information to configure RSLinx Classic to communicate with a DH+ network from a computer with an ANC-120e USB to Data Highway Plus adapter.*

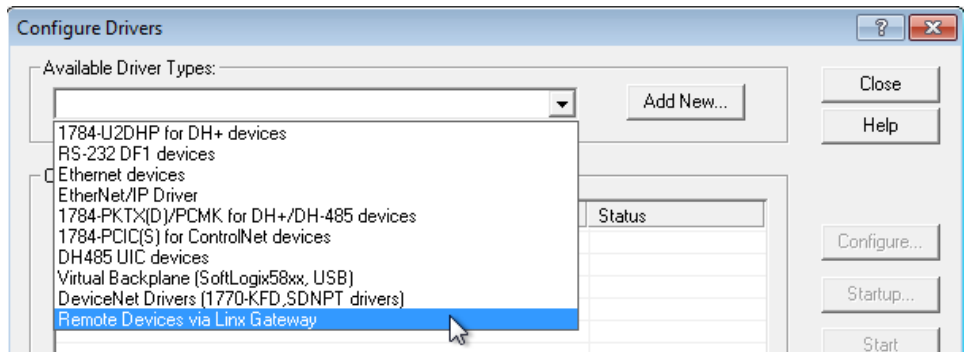
Note: Before proceeding, make sure

- ✓ ANC-120e Driver is installed
- ✓ Network adapter is correctly configured to access ANC-120e
- ✓ ANC-120e is connected to the computer and DH+ network (Refer to appendix for Connections instructions and more information)

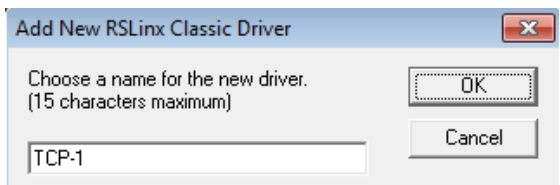
1. Open “RSLinx Classic”
2. Click on “Communications” menu
3. Click on “Configure Drivers”



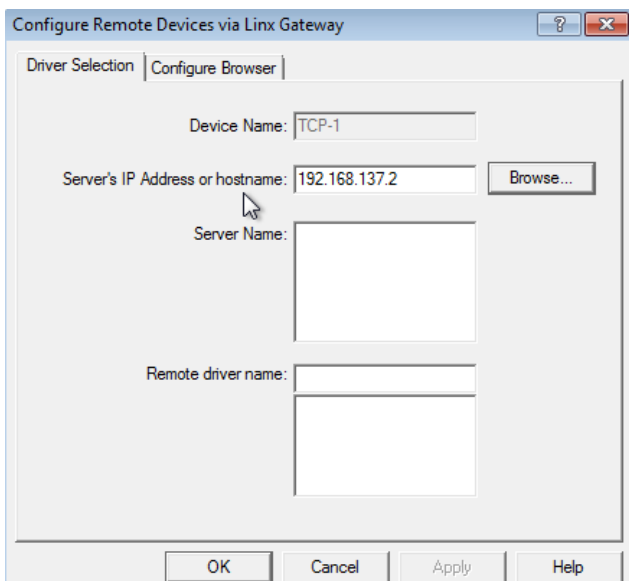
- 4. Select “Remote Devices via Linx Gateway” from the Drop down list
- 5. Click on “Add New” Button



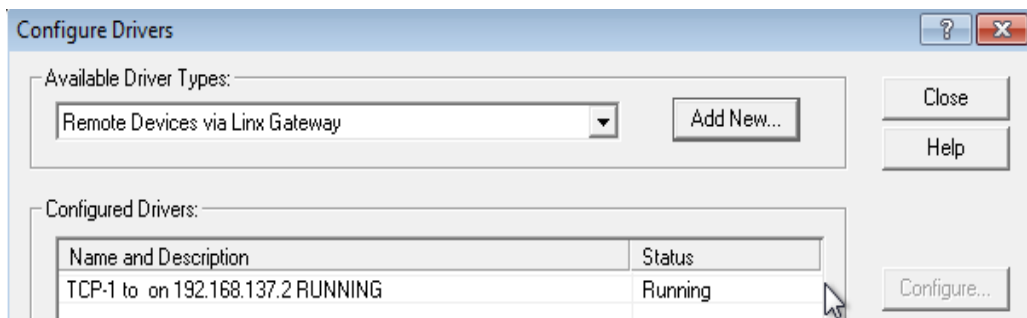
- 6. Enter the name for the driver or use the default name
- 7. Click “OK”



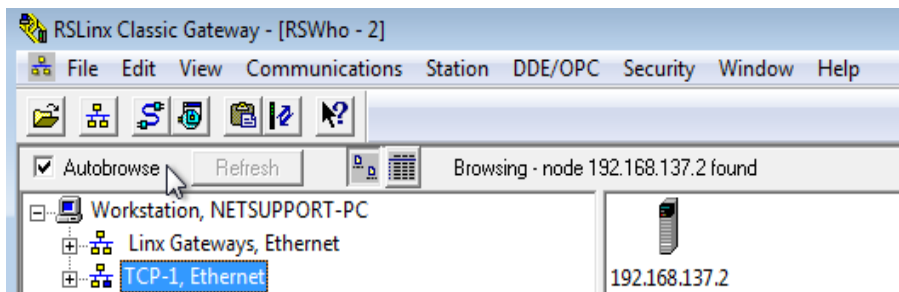
- 8. Enter the IP address of ANC-120e in the “Server’s IP Address or hostname:” field  
(Default is 192.168.137.2)
- 9. Click “OK”



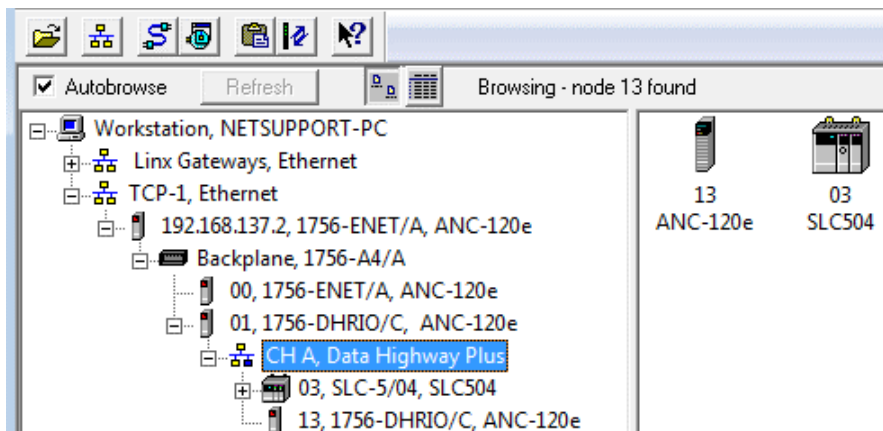
- 10. Verify that the Driver is *“Running”*
- 11. Click on *“Close”* button



- 12. Open *“RSWho”* window
- 13. Click the checkbox to activate *“Autobrowse”* option
- 14. Double click on the driver element (In our example is TCP-1) to start browsing the ANC-120e. During browsing, you will notice that more elements appear in a branch fashion



- 15. Keep browsing until you reach *“CH A, Data Highway plus”*  
All the devices connected to the same DH+ network as the ANC-120e will appear here



---

## Appendix

### ***ANC-120e DH+ connection***

There are 2 ways to connect to the DH+ network.

- Connect to Processor's 3-pin connector: Daisy chain a cable from the last DH+ node to the connector of ANC-120e. (Cable shield is not required for ANC-120e). Polarity is irrelevant, as it is auto-detected by ANC-120e
- Connect to DH+ Programming Terminal on processor by using the ANC-120e Mini-Din Programming Cable

Connect the DH+ cable to ANC-120e and then connect to a free USB port on your computer.

When the unit turns on, the USB LED blinks several times.

**Note:** *if **AUTO Baud rate** and **AUTO DH+ Node** options are active in ANC-120e, the device will automatically configure the correct DH+ network speed and find a free DH+ node number to use as its own address. So you don't need any configuration to start programming DH+ processor.*

The ANC-120e DH+ side LED blinks every 3 seconds if it is associated with the DH+ network and nothing is being transmitted on the DH+ link. When DH+ data exchange takes place, the LED will indicate this by blinking rapidly upon transmitting/receiving a valid DH+ packet. DH+ LED will remain off if the DH+ network is not connected or there are no devices on the connected network.

### ***About RSWho window and AutoBrowse option***

RSLinx "Autobrowse" option is good to initially discover all active nodes on a particular DH+ network quickly and easily, however, because of the extra traffic this feature generates, it is recommended to have the "Autobrowse" checkbox unchecked in the production environment.

For more information about settings and other options, please refer to ANC-120e User Manual.