

# ANC-100e Wonderware ABCIP DAServer, Ethernet/IP to Data Highway Plus Application Note

---

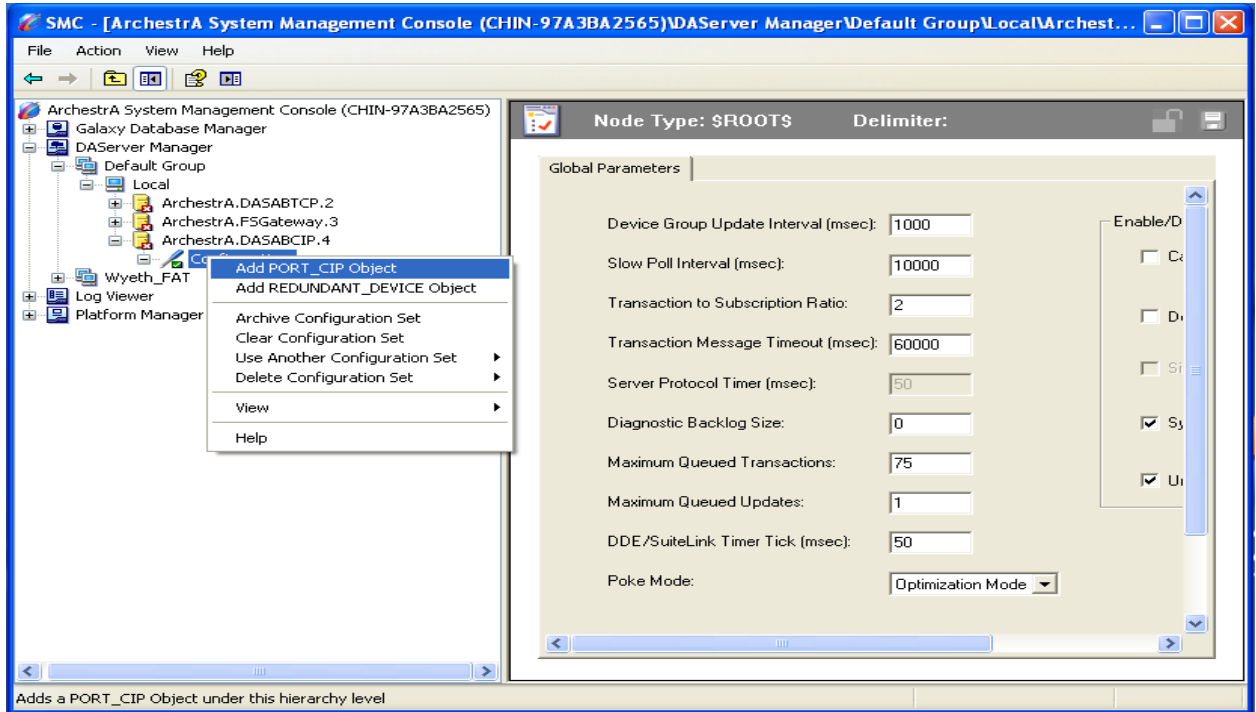
## SMC User Setup

*This document provides information on how to setup the Automation Networks ANC-100e with a PC running Wonderware ABCIP DAServer on Ethernet/IP for communications to a PLC-5 on AB's DH+.*

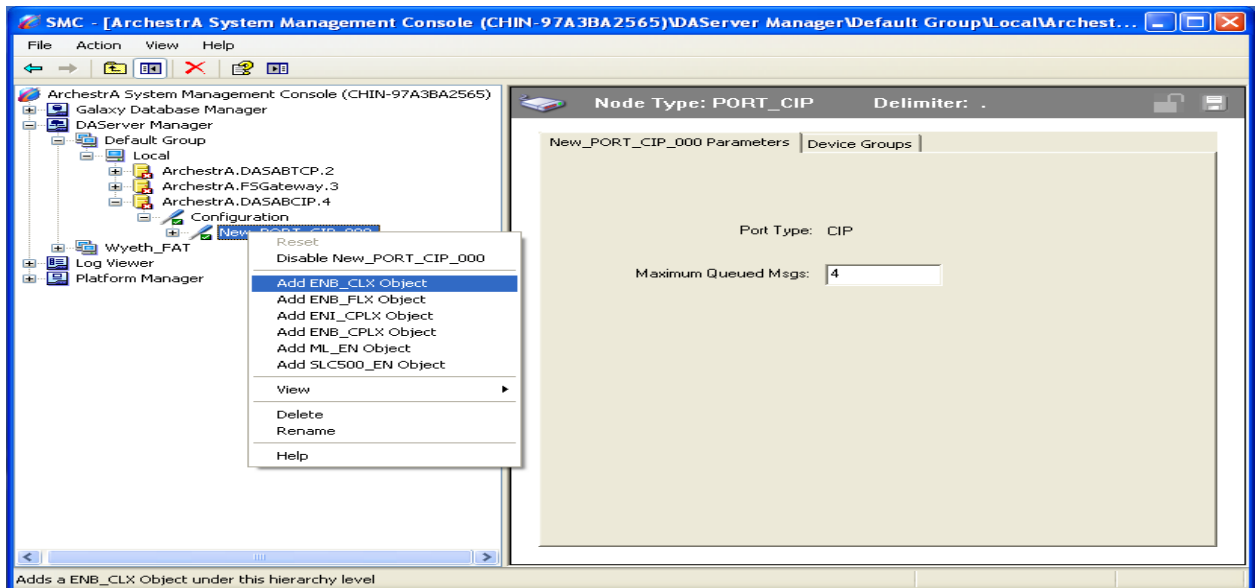
*The ANC-100e will communicate with many devices that are DH+ nodes which include AB Panelviews, SLC 5/04s, and PLC-5s etc.*

- ❖ *Note: Before proceeding, make sure*
  - *Network adapter is correctly configured to access ANC-100e*
  - *ANC-100e is connected to the PC or Ethernet network and DH+ network.*

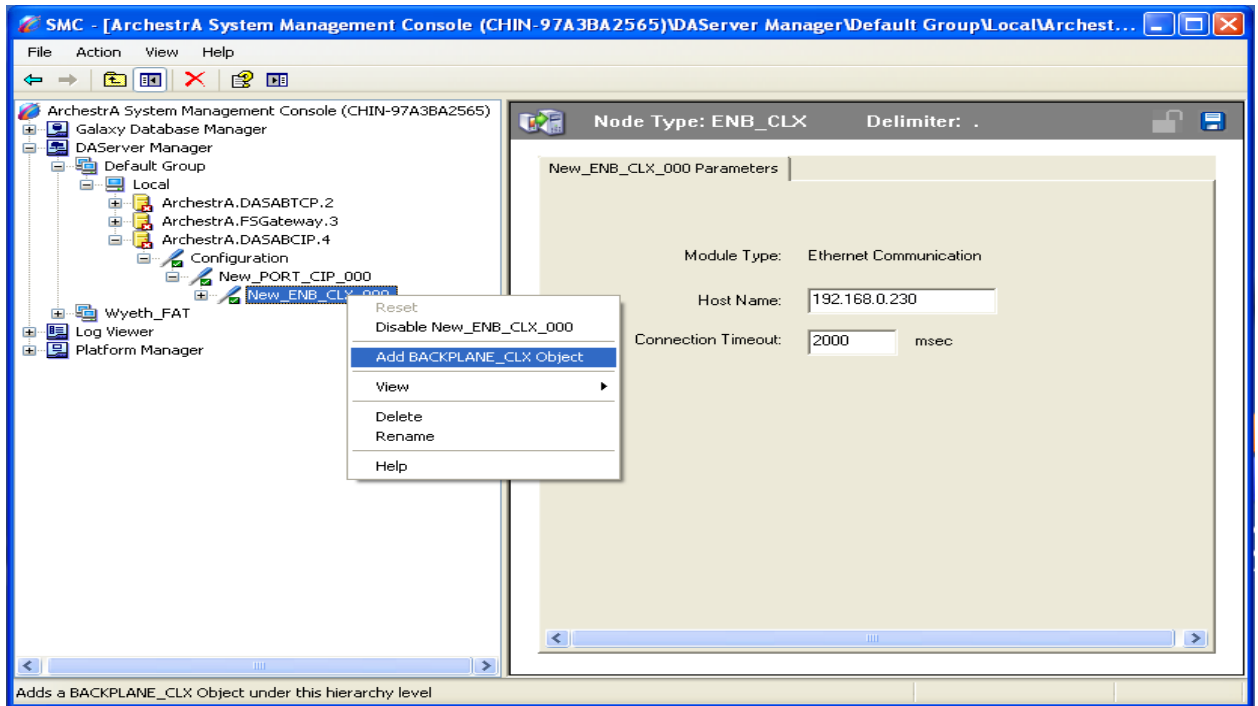
1. Open System Management Console
2. Select DASABCIP
3. Right click the “Configuration” and select “add PORT\_CIP Object”



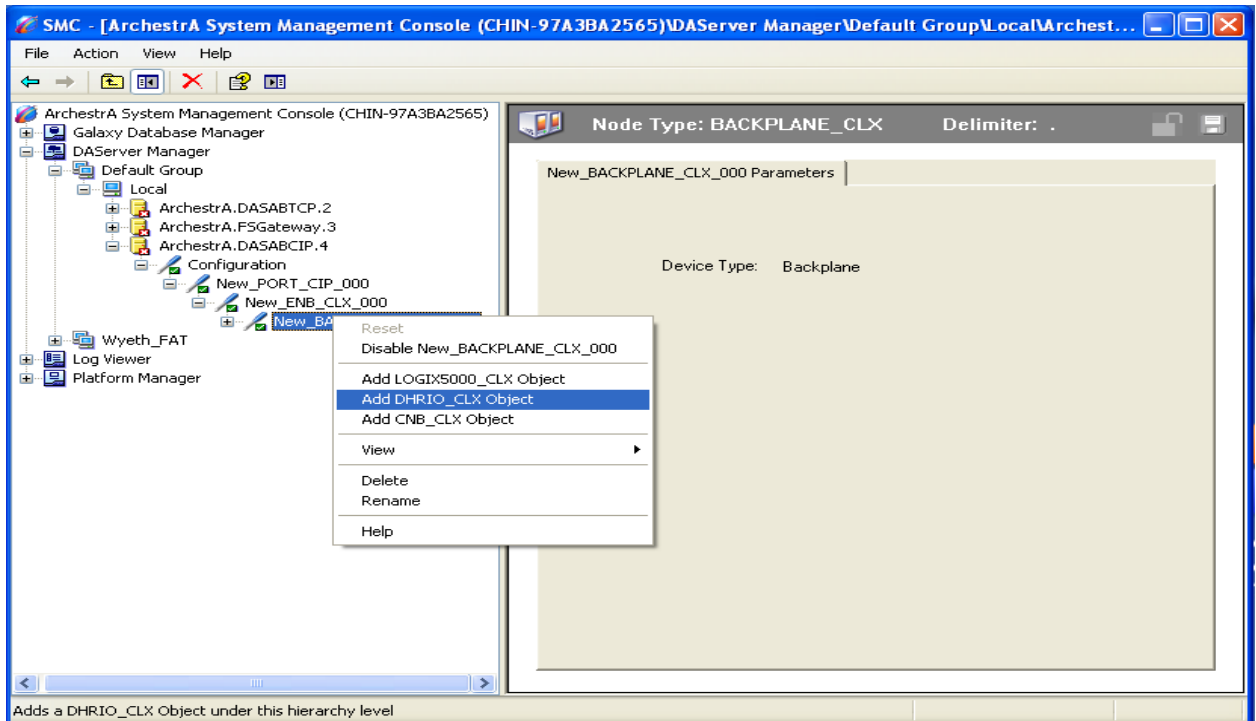
4. Right click the “New\_PORT\_CIP\_000” and select “add ENB\_CLX Object”



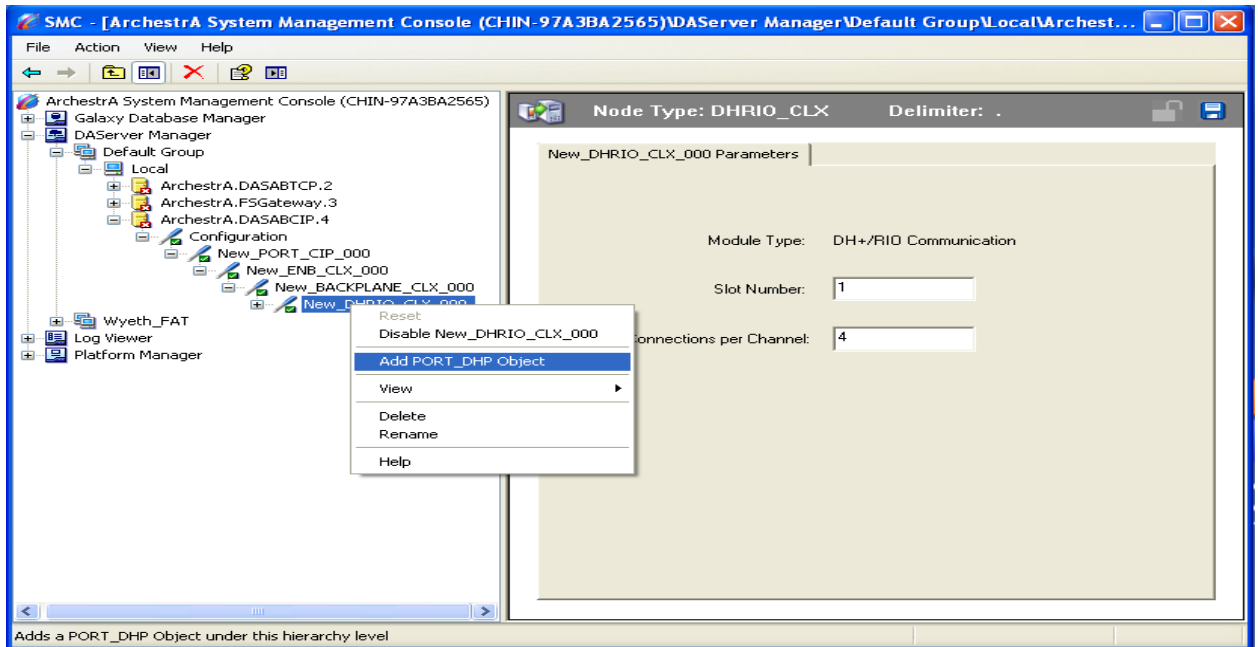
5. Enter the ANC 100e IP address in the Host Name Box. Default IP address is 192.168.0.230
6. Right click the “New\_ENB\_CLX\_Object” and select “Add BACKPLANE\_CLX Object”



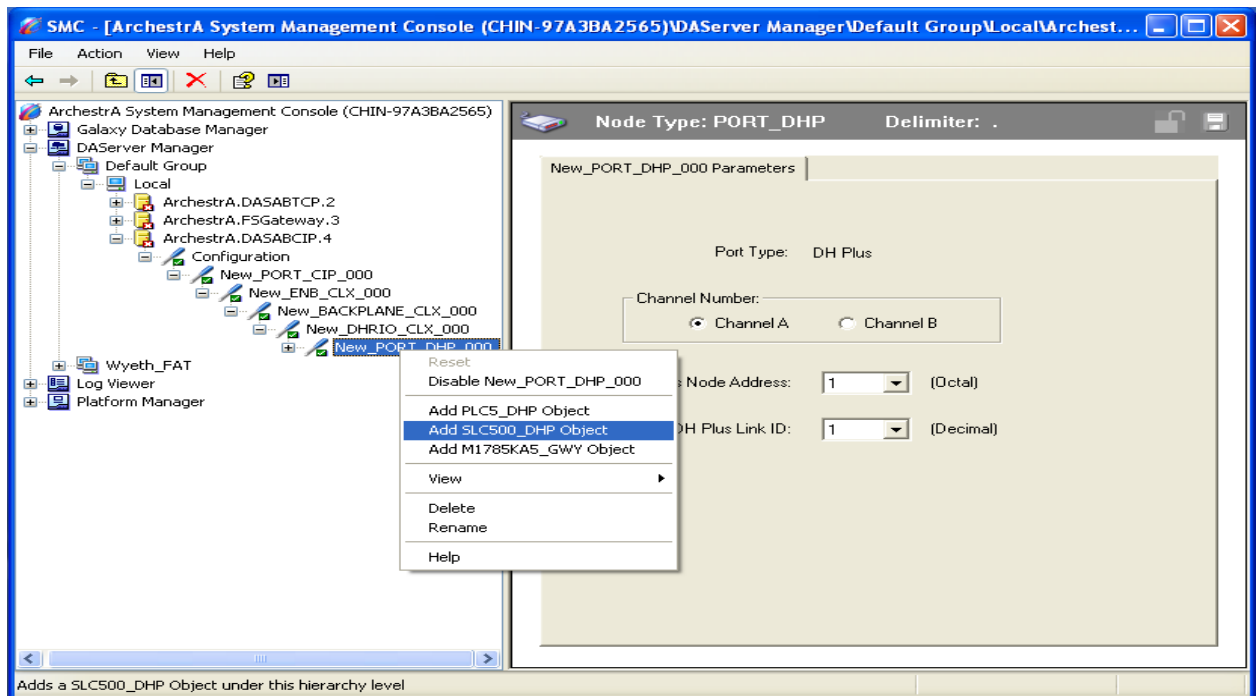
7. Right click the “New\_BACKPLANE\_CLX Object” and select “Add DHRIO\_CLX Object”



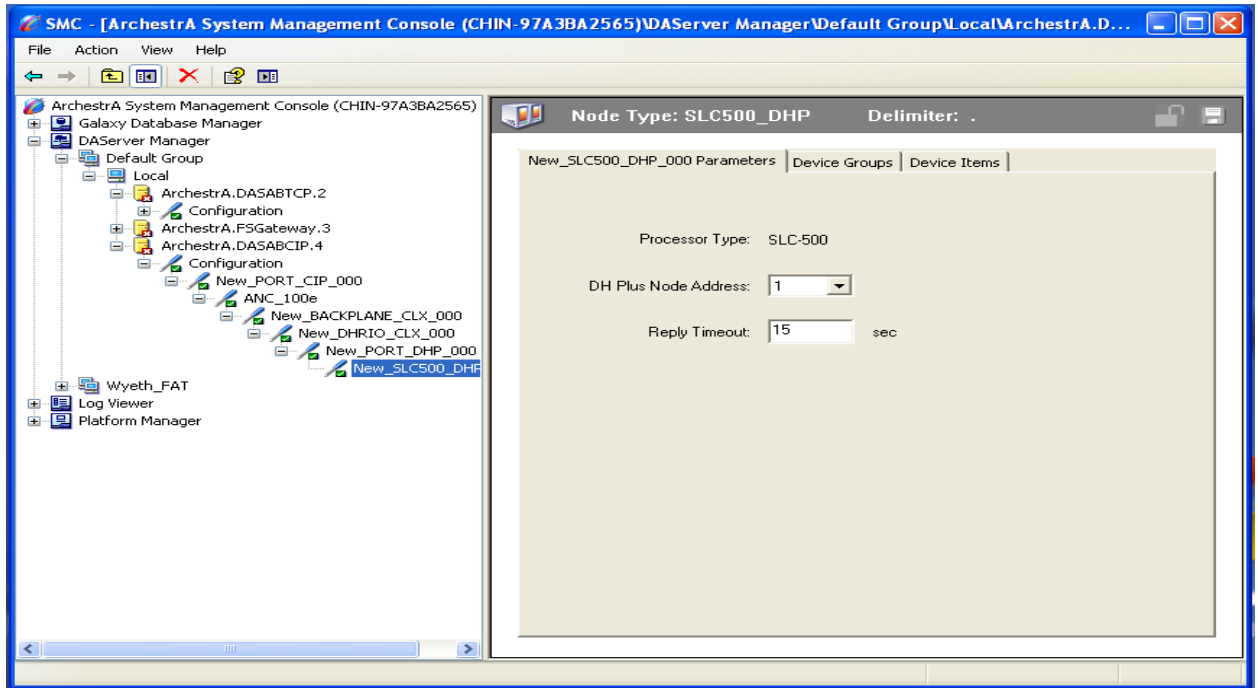
8. The Slot Number can be found in RSLINX
9. Right click the “New\_ DHRIO\_CLX Object” and select “Add PORT\_DHP Object”



10. The Channel Number, DH Plus Node Address and Link ID can be found in RSLINX
11. Right click the “New\_DHRIO\_CLX Object” and select “Add SLC500\_DHP Object” or “Add PLC5\_DHP Object”



12. Entry the DH+ node address of the PLC5 or SLC500



13. Create one Device Group

14. Right click the “Archestra.DASABCIP.4” and select “Activate Server”

