

PanelView Plus 6 configuration for DH+ communication with ANC-100e

This document provides information to configure a Panel View Plus to communicate with SLC5/04 or a PLC5 on a DH+ network with an ANC-100e Ethernet to Data Highway Plus converter.

Note: Before proceeding, make sure

- ✓ ANC-100 is properly connected to the DH+ and Ethernet networks
- ✓ Network adapter of PanelView is correctly configured to access ANC-100e

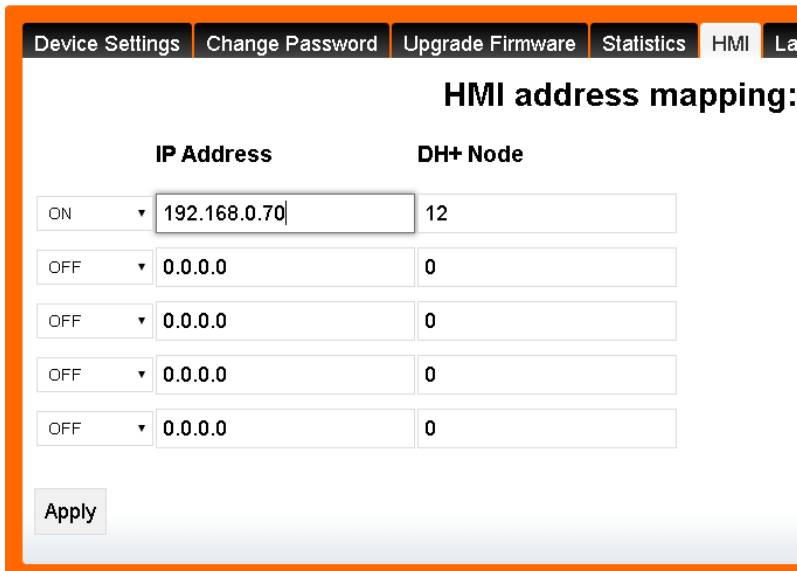
For this example:

***ANC-100e IP address = 192.168.0.230**

*You could use a **SLC 5/05,5/04** or **PLC 5/40** and the **IP address** could be = **192.168.0.70**

* **Node address = 12**

1. Open ANC-100e web interface.
2. Go to the “HMI” tab and submit the next information. Then click “Apply”

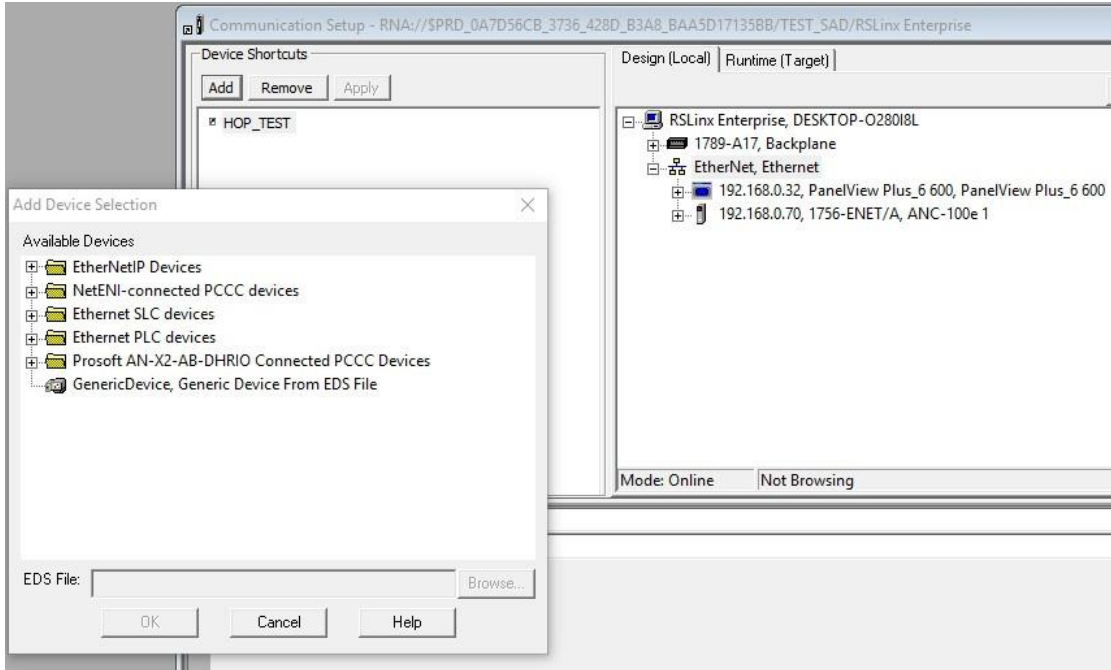


The screenshot shows the 'HMI address mapping' configuration page. At the top, there are navigation tabs: 'Device Settings', 'Change Password', 'Upgrade Firmware', 'Statistics', 'HMI', and 'Lan'. The 'HMI' tab is selected. The main heading is 'HMI address mapping:'. Below this, there is a table with two columns: 'IP Address' and 'DH+ Node'. The first row has a dropdown menu set to 'ON', an input field containing '192.168.0.70', and an input field containing '12'. The subsequent four rows have dropdown menus set to 'OFF', input fields containing '0.0.0.0', and input fields containing '0'. At the bottom left, there is an 'Apply' button.

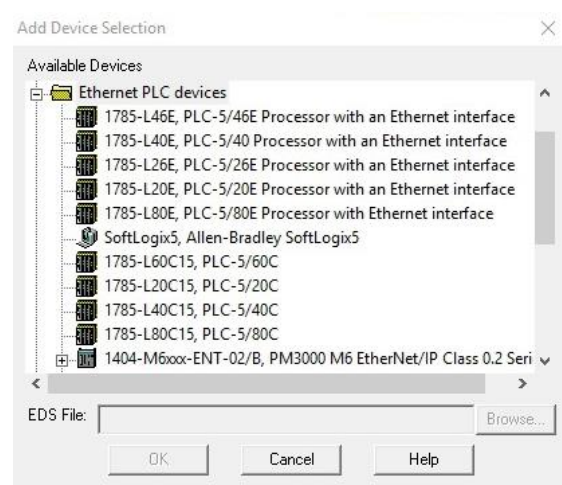
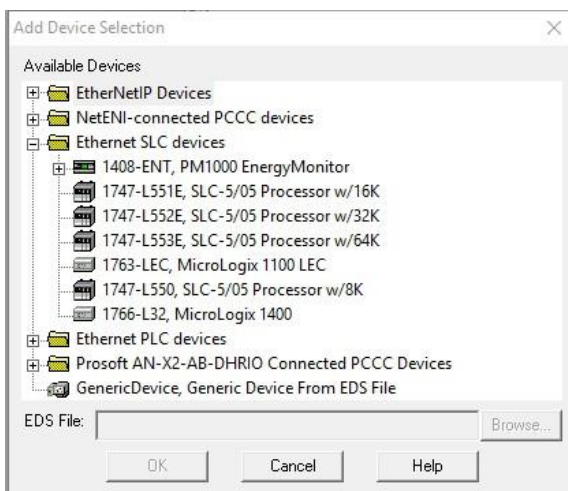
	IP Address	DH+ Node
ON	192.168.0.70	12
OFF	0.0.0.0	0
OFF	0.0.0.0	0
OFF	0.0.0.0	0
OFF	0.0.0.0	0

Apply

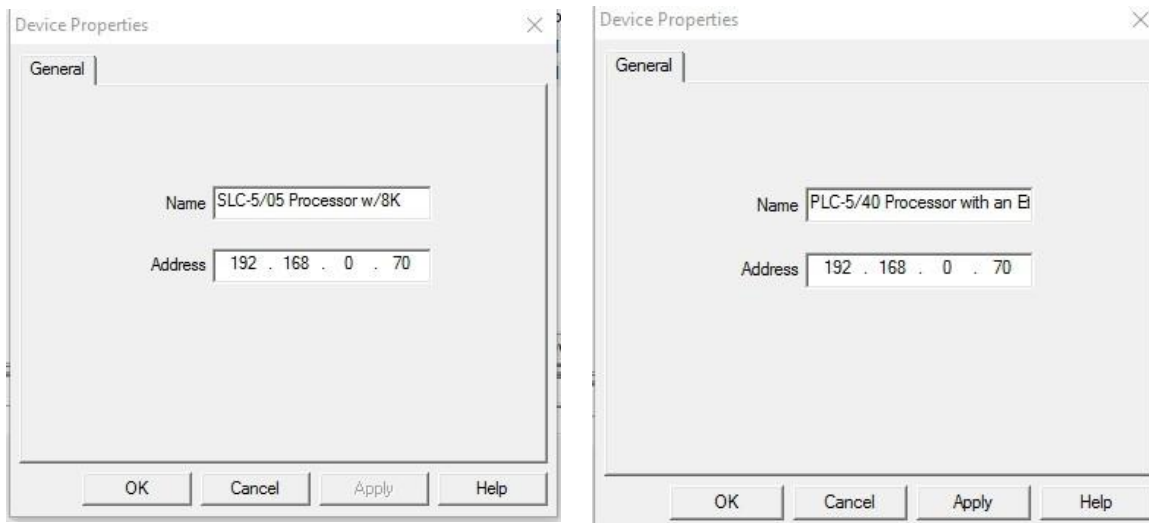
- In Rslinx Enterprise configuration, you must add a PLC or SLC device from the “Ethernet SLC devices” or “Ethernet PLC devices” folders, depending on what is the target on the DH+ network. Below are two examples. One is choosing the device SLC504 and the other one is choosing PLC5.



- When selecting the model do not worry if it is not the exact same model. Example given: You are working with a SLC5/04, but there is no SLC5/04 model with 8K of memory in the Add Device Selection window. Then you will have to choose a SLC5/05 with the same amount memory for it to work.



5. Then enter the IP address of the PLC in the “Address” field



6. Using this configuration, you should be able to communicate with the PLC5 or SLC500 on DH+ from your Panel View