

PanelView 7 Plus configuration for DH+ communication with ANC-100e

This document provides information to configure a Panel View 7 Plus to communicate with SLC5/04 or a PLC5 on a DH+ network with an ANC-100e Ethernet to Data Highway Plus converter.

Note: Before proceeding, make sure

- ✓ ANC-100 is properly connected to the DH+ and ethernet network and can be accessed by your computer.
- ✓ Network adapter of PanelView is correctly configured to access the SLC or PLC in DH+

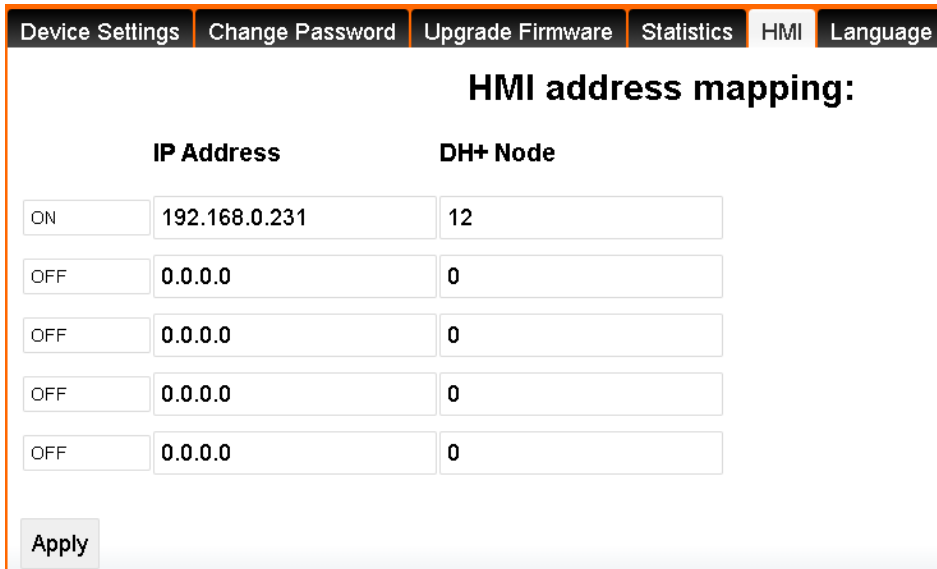
For this example:

***ANC-100e IP address = 192.168.0.230**

*Use a **SLC 5/05,5/04** or **PLC 5/40**, the **ip address** would be = **192.168.0.231**

* **Node address = 12** (review the node in Rslinx, you must type the node in decimal inside the ANC120e, not Octal).

1. Open ANC-100e web interface.
2. Go to the “HMI” tab and submit the next information. Then click “Apply”

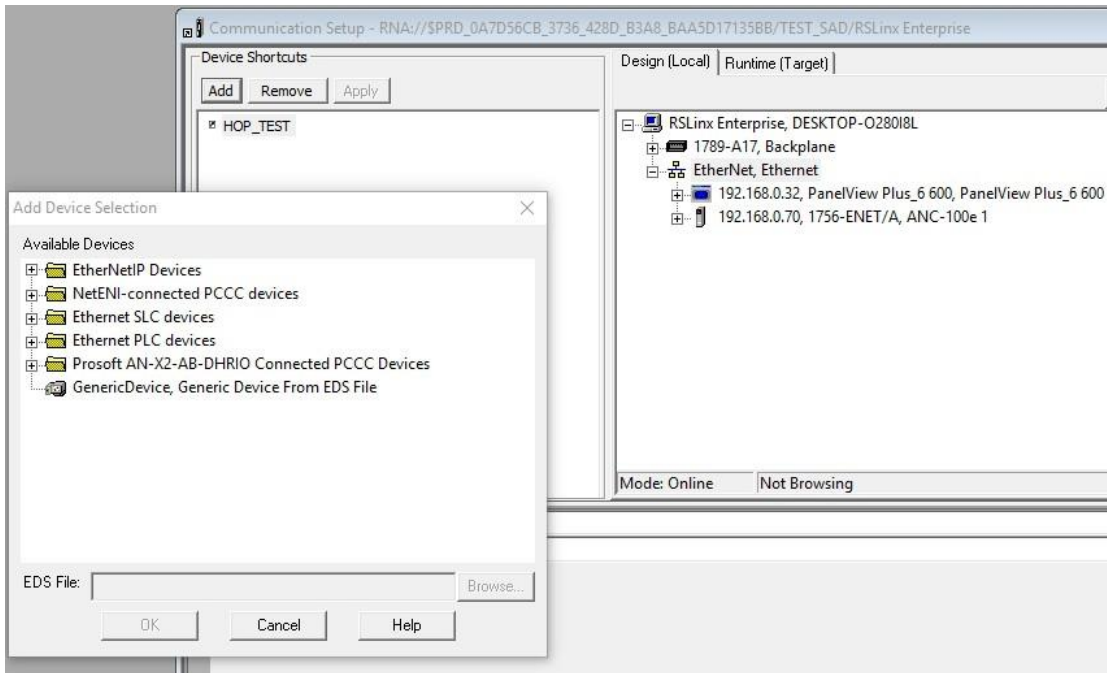


The screenshot shows the web interface of the ANC-100e converter. At the top, there are navigation tabs: "Device Settings", "Change Password", "Upgrade Firmware", "Statistics", "HMI", and "Language". The "HMI" tab is selected. Below the tabs, the heading "HMI address mapping:" is displayed. The configuration is presented in a table with two columns: "IP Address" and "DH+ Node". There are five rows of input fields. The first row has a status indicator "ON", an IP address of "192.168.0.231", and a node address of "12". The remaining four rows have status indicators "OFF", IP addresses of "0.0.0.0", and node addresses of "0". At the bottom left of the form, there is an "Apply" button.

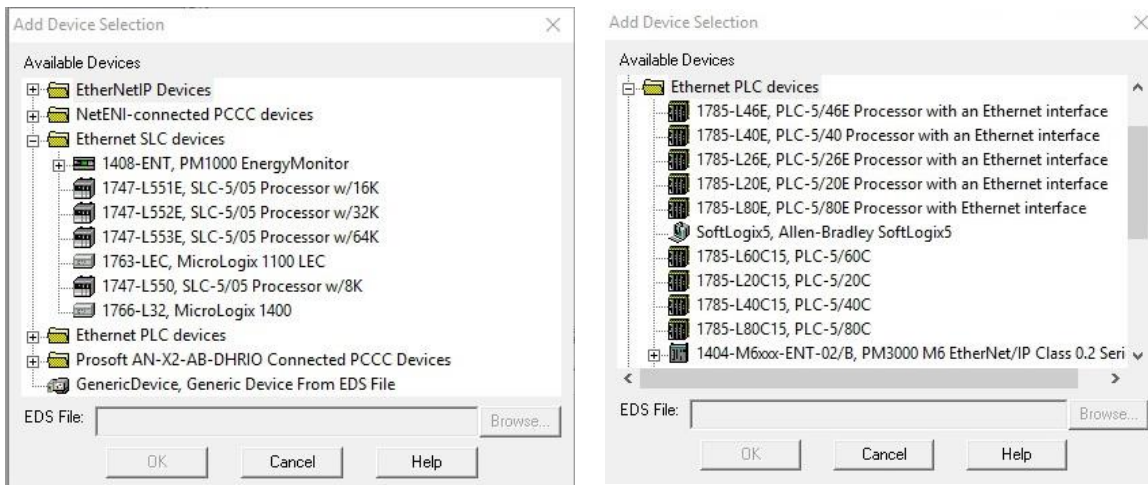
	IP Address	DH+ Node
ON	192.168.0.231	12
OFF	0.0.0.0	0
OFF	0.0.0.0	0
OFF	0.0.0.0	0
OFF	0.0.0.0	0

Apply

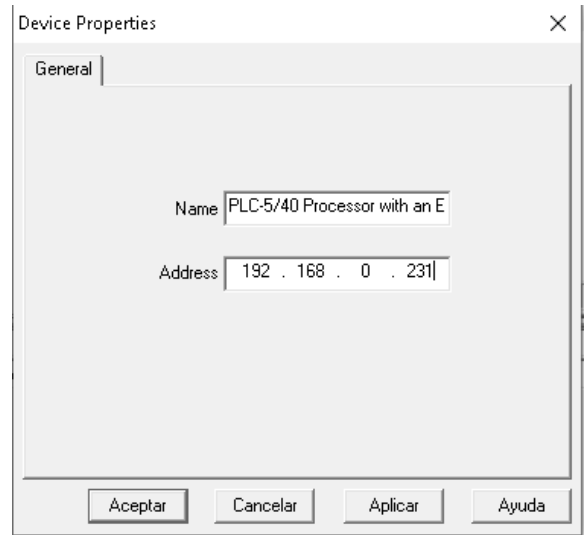
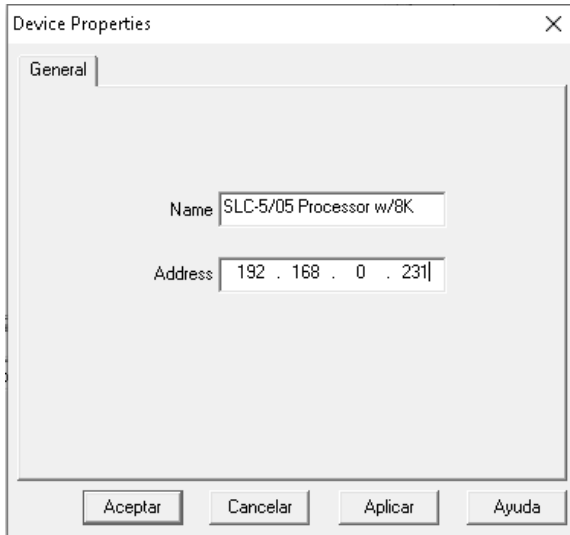
- In Rslinx Enterprise configuration, you must add a PLC or SLC device from the “Ethernet SLC devices” or “Ethernet PLC devices” folders, depending on what is the target on the DH+ network. Below are two examples. One is choosing the device SLC504 and the other one is choosing PLC5.



- When selecting the model do not worry if it is not the exact same model. Example given: You are working with a SLC5/04, but there is no SLC5/04 model with 8K of memory in the Add Device Selection window. Then you will have to choose a SLC5/05 with the same amount memory for it to work.



5. Then enter the IP address of the PLC in the “Address” field



6. Using this configuration, you should be able to communicate with the PLC5 or SLC500 on DH+ from your Panel View