

Cyberlogix DHX EthernetIP to DH Plus Communication

This document provides information to configure a Cyberlogix DHX software to communicate with a SLC5/04 on Data Highway Plus using an ANC-100e or ANC-120e.

Note: Before proceeding, make sure

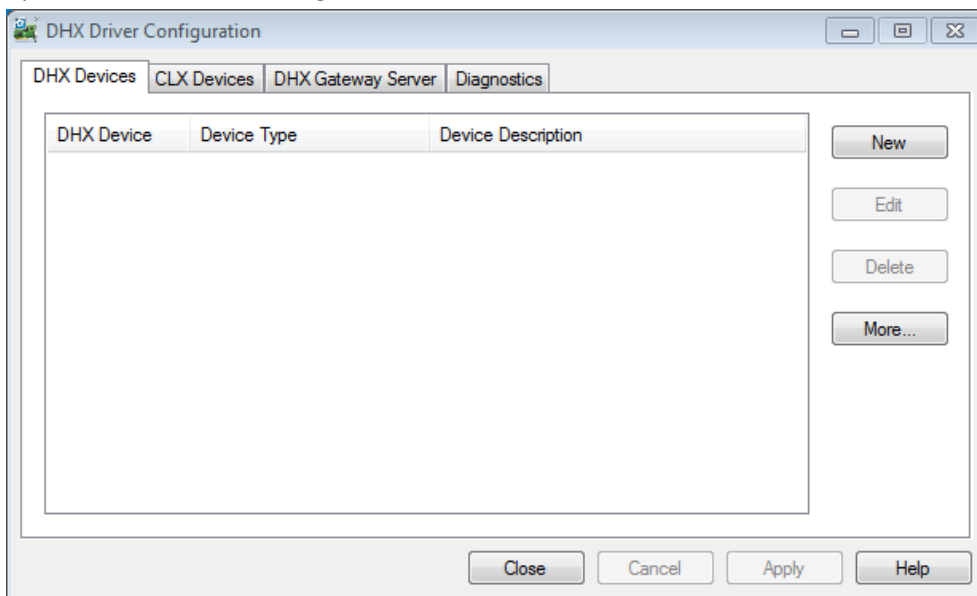
- ✓ ANC-120e Driver is installed (*Only if using ANC-120e*)
- ✓ Network Adapter is correctly configured to access ANC-120e or ANC-100e
- ✓ ANC-120e is connected to the computer and DH+ network or ANC-100e is connected to the same Ethernet network or directly to your computer, and to the DH+ network.

For our example:

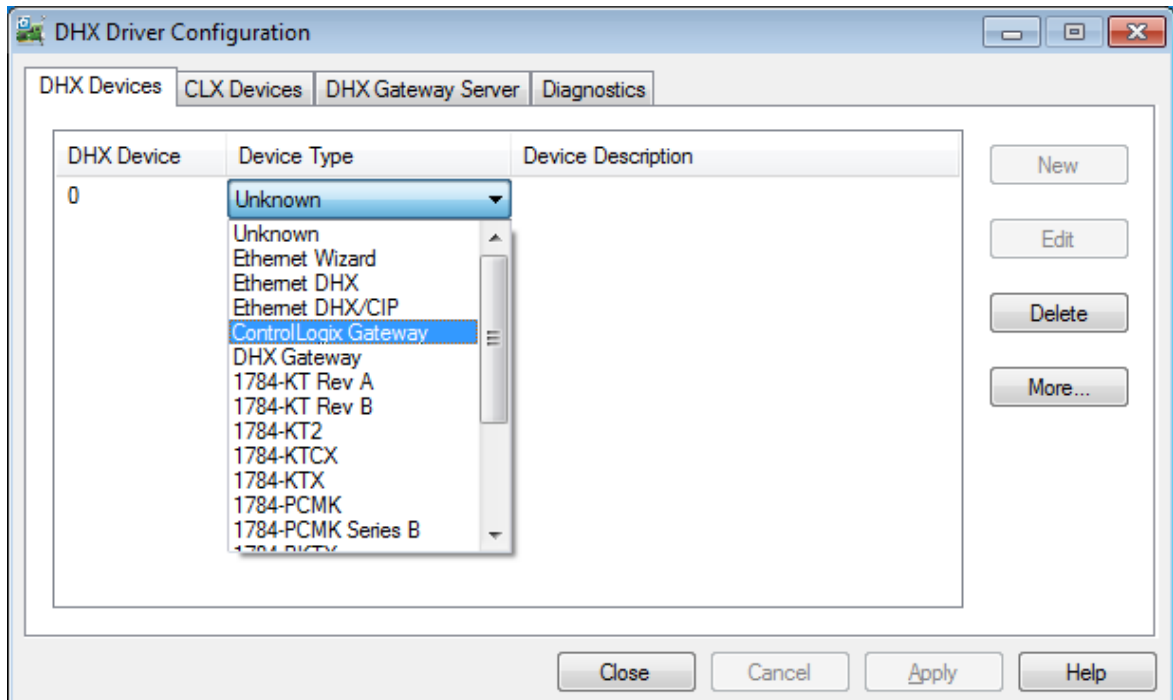
ANC-120e IP address = **192.168.137.2**

SLC5/04 DH+ node = **03**

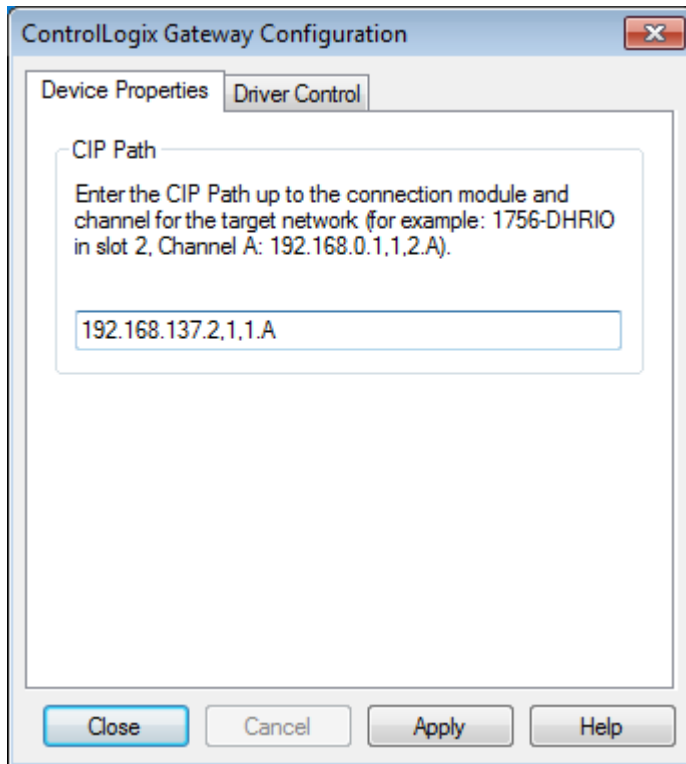
1. Open the DHX driver configuration window and click on **New**



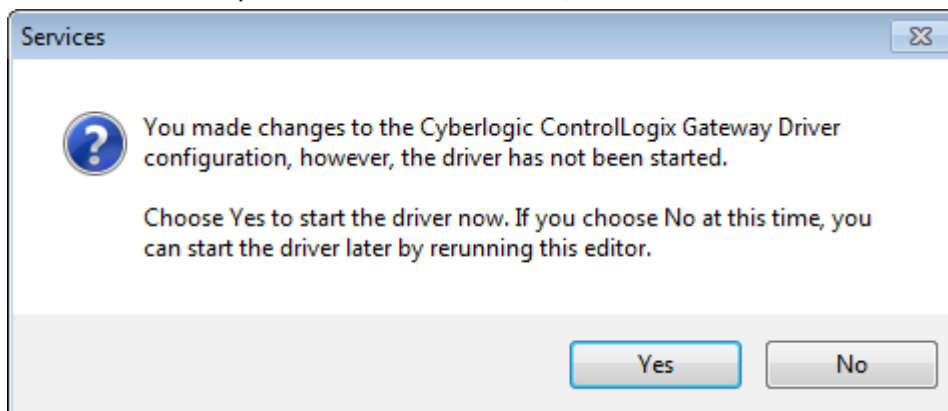
2. Select ControLogix Gateway from the drop down list.



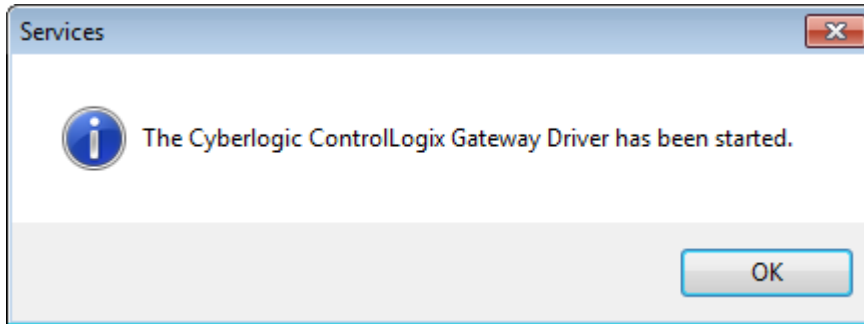
3. On the ControlLogix Gateway configuration page, enter the CIP path as follows:
IP_address_of_ANC-100e_or_ANC-120e, 1,1.A
And click the "Apply" button.



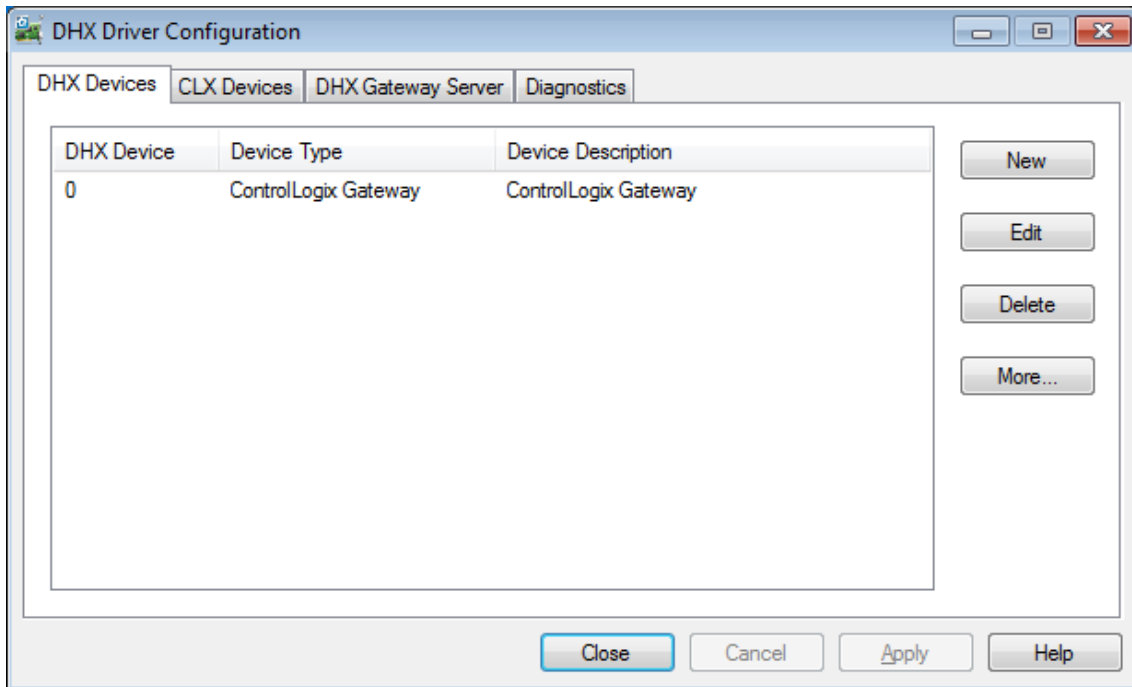
4. You will be asked if you want to start the driver, click on **YES**.



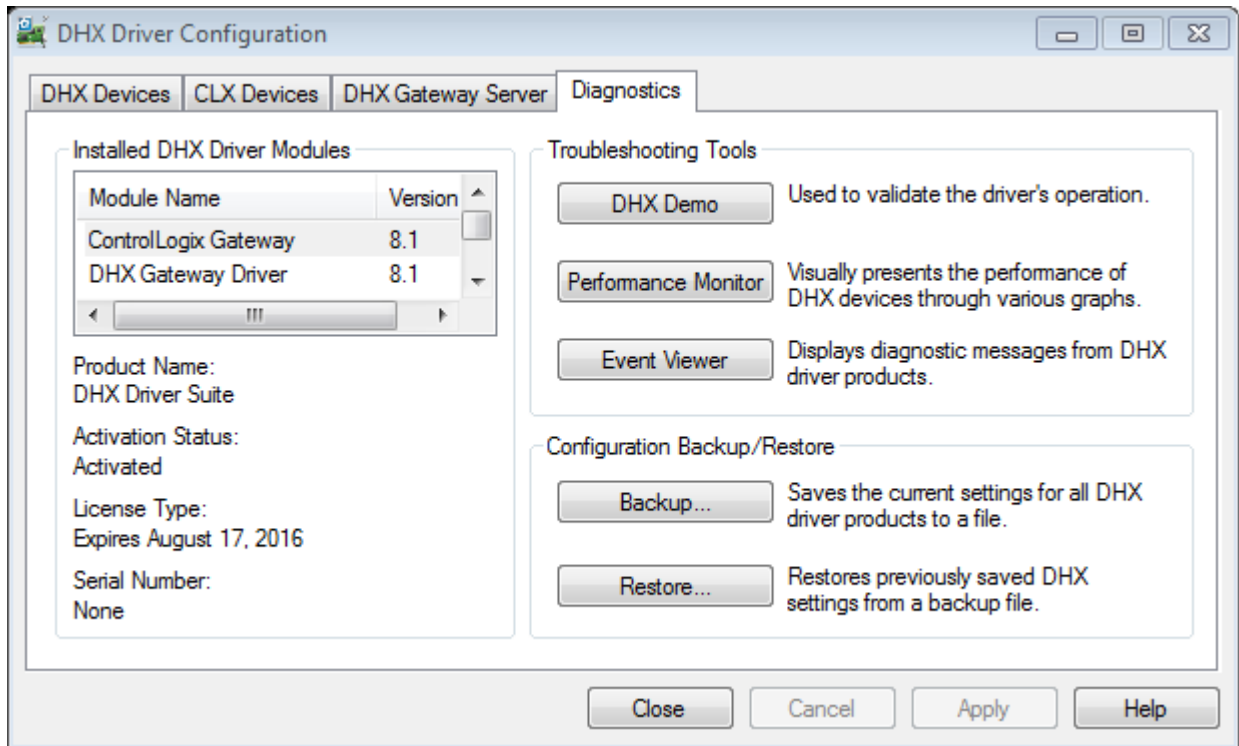
- 5. Click OK to confirm that the driver has started.



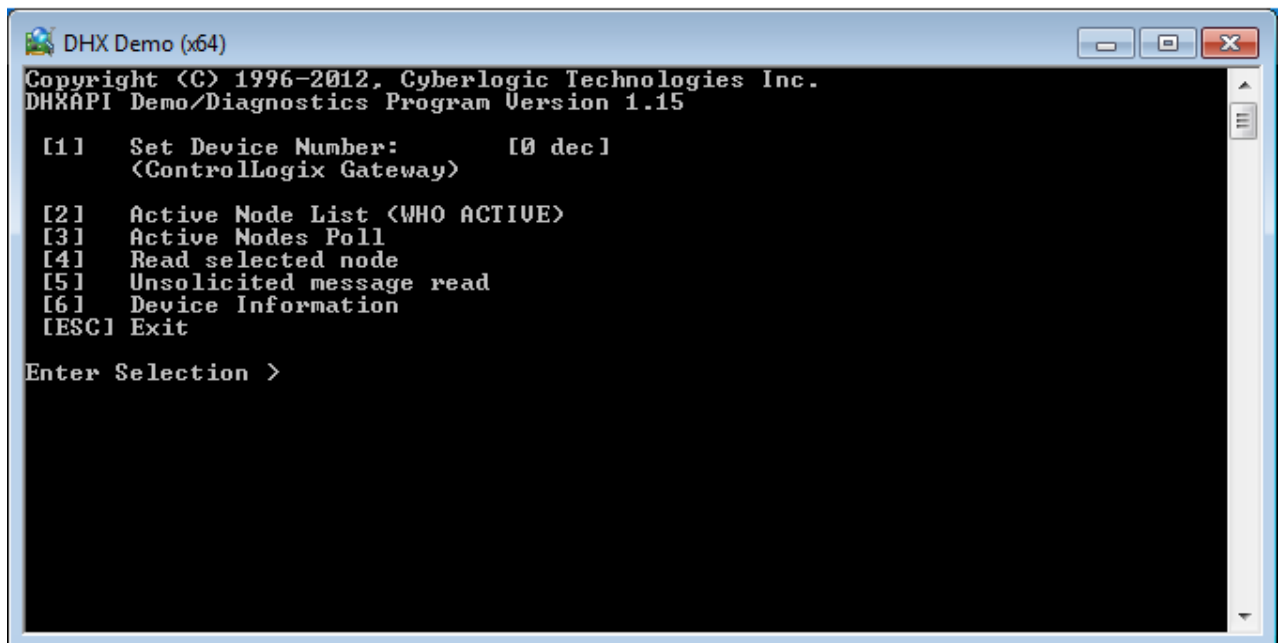
- 6. Click on the "Diagnostics" tab



7. Click on the DHX demo button.



8. Enter "4" and press the "Enter" key to use the "Read selected Node" option to make a test



- 9. For "PLC Node Address" enter the DH+ Node Number of the PLC you want to read from and press "Enter"

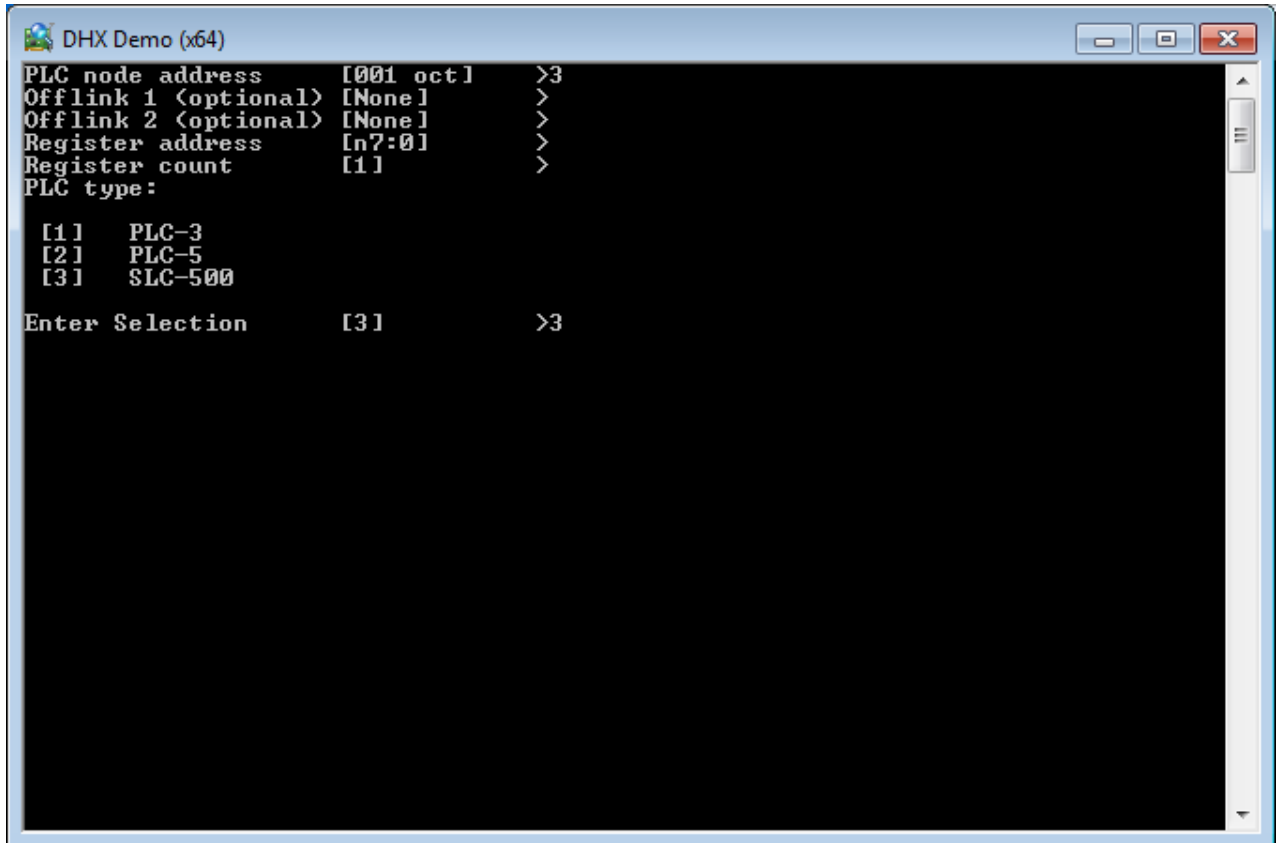
For our example: it is Node 3

For "Offlink 1" and "Offlink2", just press enter to use default values

For "Register address", enter the address that you want to read, (by default N7:0) and press "Enter"

For "Register count" enter the number of values to read (by default 1) and press "Enter"

You will be required to select the correct PLC type. Enter the proper option and press "Enter"



- 10. If you configured everything properly you should see the value stored on the register address.
On our N7:0 we have a Value of 1616

