

PanelView 7 Plus configuration for DH+ communication with ANC-120e

This document provides information to configure a Panel View 7 Plus to communicate with SLC5/04 or a PLC5 on a DH+ network with an ANC-120e USB to Data Highway Plus converter.

Note: Before proceeding, make sure

- ✓ ANC-120 is properly connected to the DH+ and computer
- ✓ Network adapter of PanelView is correctly configured to access the SLC or PLC in DH+

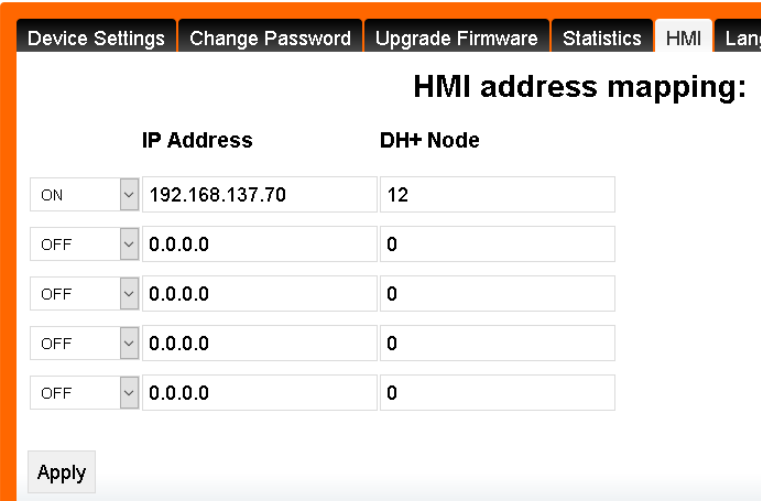
For this example:

***ANC-120e IP address = 192.168.137.2**

*Use a **SLC 5/05,5/04** or **PLC 5/40**, the **ip address** would be = **192.168.137.70**

* **Node address = 12** (review the node in Rslinx, you must type the node in decimal inside the ANC120e, not Octal).

1. Open ANC-120e web interface.
2. Go to the “HMI” tab and submit the next information. Then click “Apply”

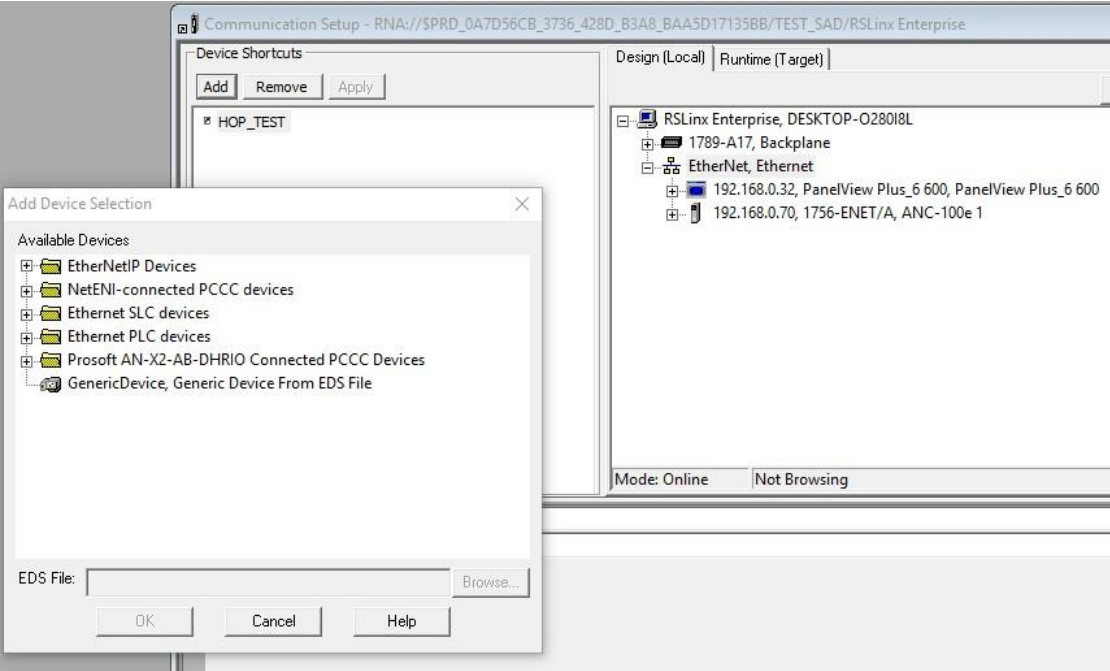


The screenshot shows the web interface of the ANC-120e converter. At the top, there are navigation tabs: Device Settings, Change Password, Upgrade Firmware, Statistics, HMI, and Language. The 'HMI' tab is selected. Below the tabs, the page title is 'HMI address mapping:'. There is a table with two columns: 'IP Address' and 'DH+ Node'. The first row is selected, with a status of 'ON', an IP address of '192.168.137.70', and a DH+ Node of '12'. The other four rows have a status of 'OFF' and an IP address of '0.0.0.0', with a DH+ Node of '0'. At the bottom left of the table area, there is an 'Apply' button.

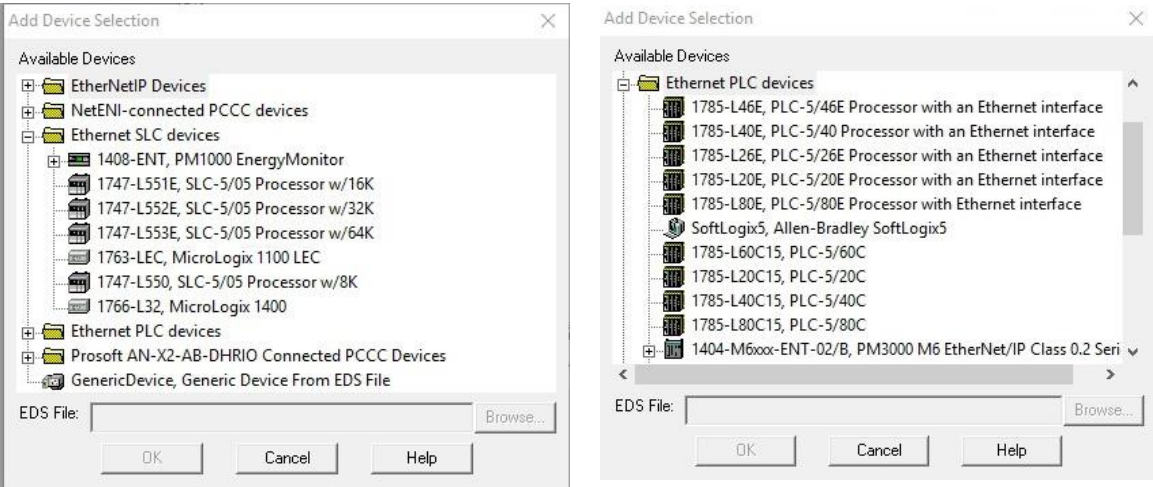
	IP Address	DH+ Node
ON	192.168.137.70	12
OFF	0.0.0.0	0
OFF	0.0.0.0	0
OFF	0.0.0.0	0
OFF	0.0.0.0	0

Apply

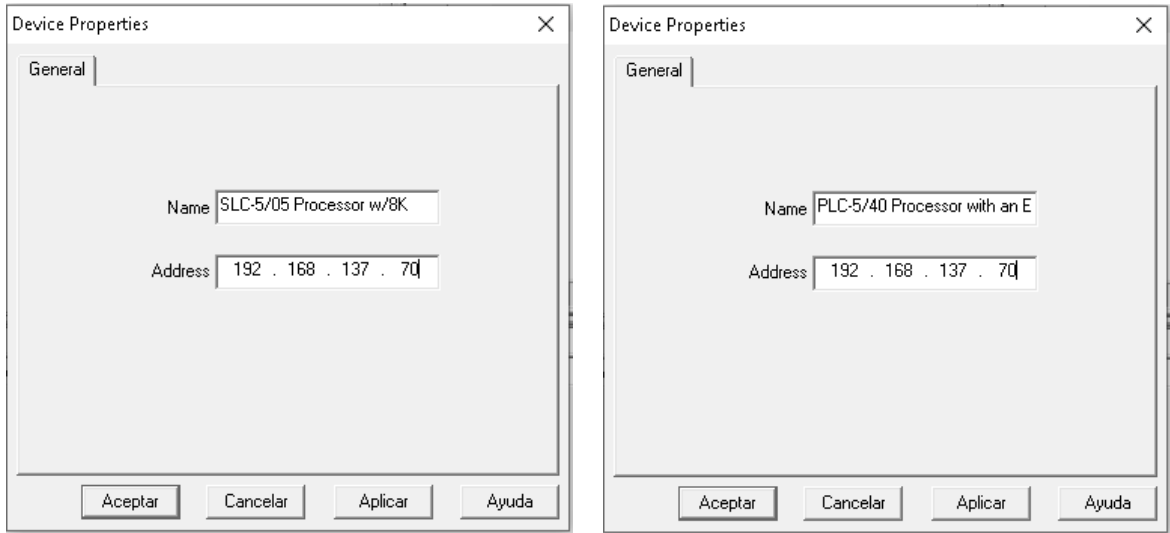
- 3. In Rslinx Enterprise configuration, you must add a PLC or SLC device from the “Ethernet SLC devices” or “Ethernet PLC devices” folders, depending on what is the target on the DH+ network. Below are two examples. One is choosing the device SLC504 and the other one is choosing PLC5.



- 4. When selecting the model do not worry if it is not the exact same model. Example given: You are working with a SLC5/04, but there is no SLC5/04 model with 8K of memory in the Add Device Selection window. Then you will have to choose a SLC5/05 with the same amount memory for it to work.



- 5. Then enter the IP address of the PLC in the “Address” field



- 6. Using this configuration, you should be able to communicate with the PLC5 or SLC500 on DH+ from your Panel View 7 Plus