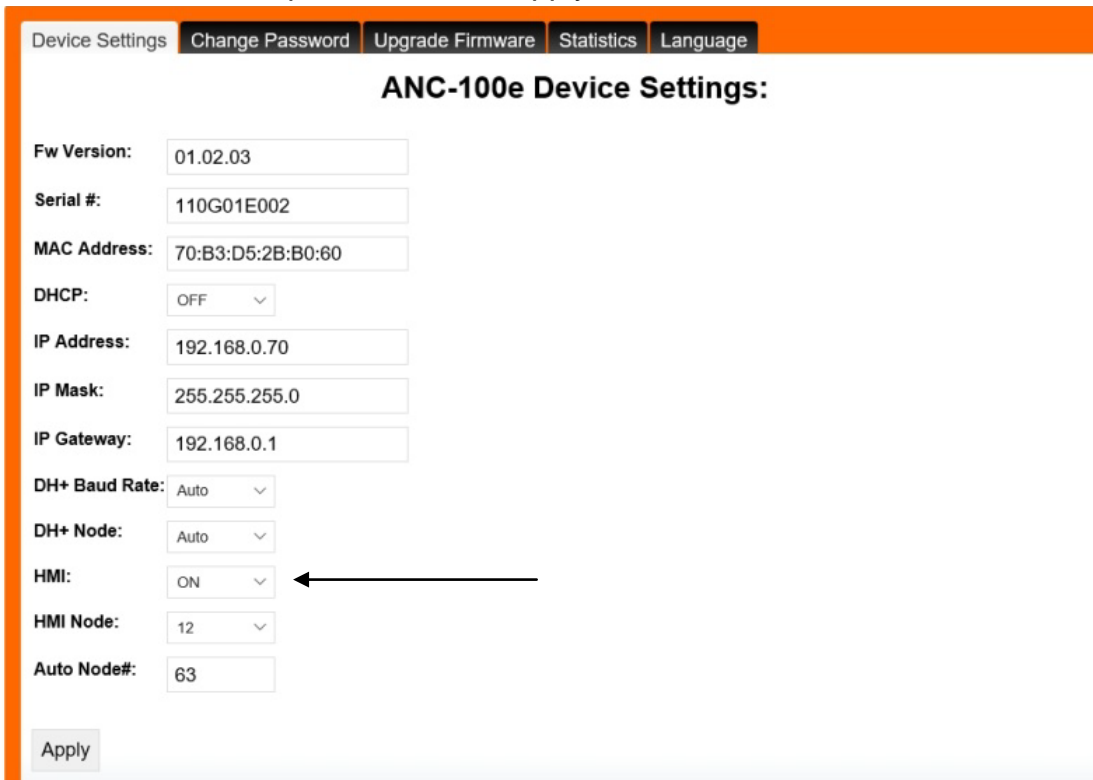


PanelView Plus 6 configuration for DH+ communication with ANC-100e

This document provides information to configure a Panel View Plus to communicate with SLC5/04 or a PLC5 on a DH+ network with an ANC-100e Ethernet to Data Highway Plus converter.

Note: Before proceeding, make sure

- ✓ ANC-100 is properly connected to the DH+ and Ethernet networks
 - ✓ Network adapter of PanelView is correctly configured to access ANC-100e
1. Open ANC-100e web interface. (For this example, the ANC-100e IP address is 192.168.0.70)
 2. Turn ON the “HMI” option and click “Apply”



Device Settings **Change Password** Upgrade Firmware Statistics Language

ANC-100e Device Settings:

Fw Version: 01.02.03

Serial #: 110G01E002

MAC Address: 70:B3:D5:2B:B0:60

DHCP: OFF

IP Address: 192.168.0.70

IP Mask: 255.255.255.0

IP Gateway: 192.168.0.1

DH+ Baud Rate: Auto

DH+ Node: Auto

HMI: ON ←

HMI Node: 12

Auto Node#: 63

Apply

3. Now you should see a field called "HMI Node". From its dropdown list, select the DH+ Node number of the SLC or PLC that you want to communicate with .

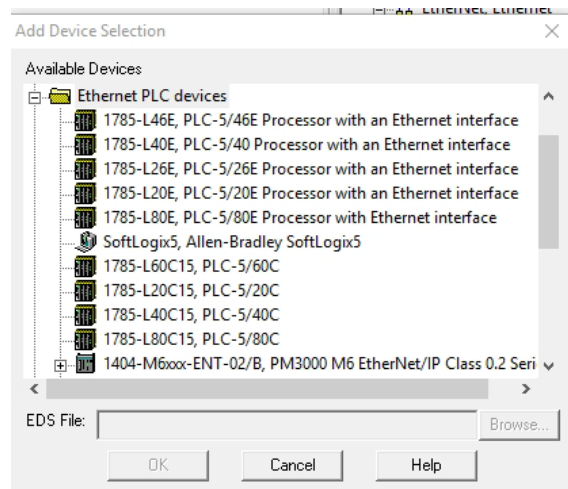
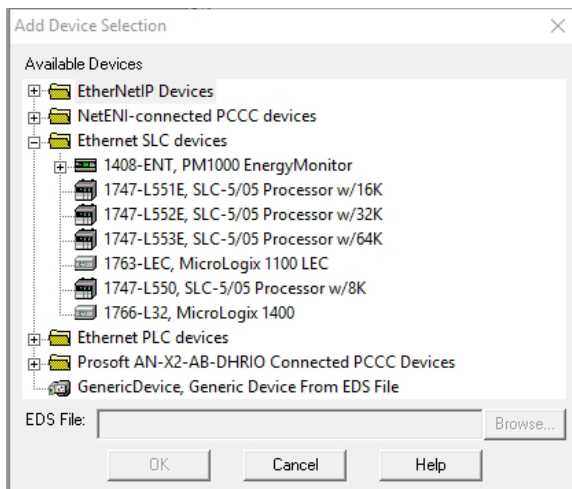
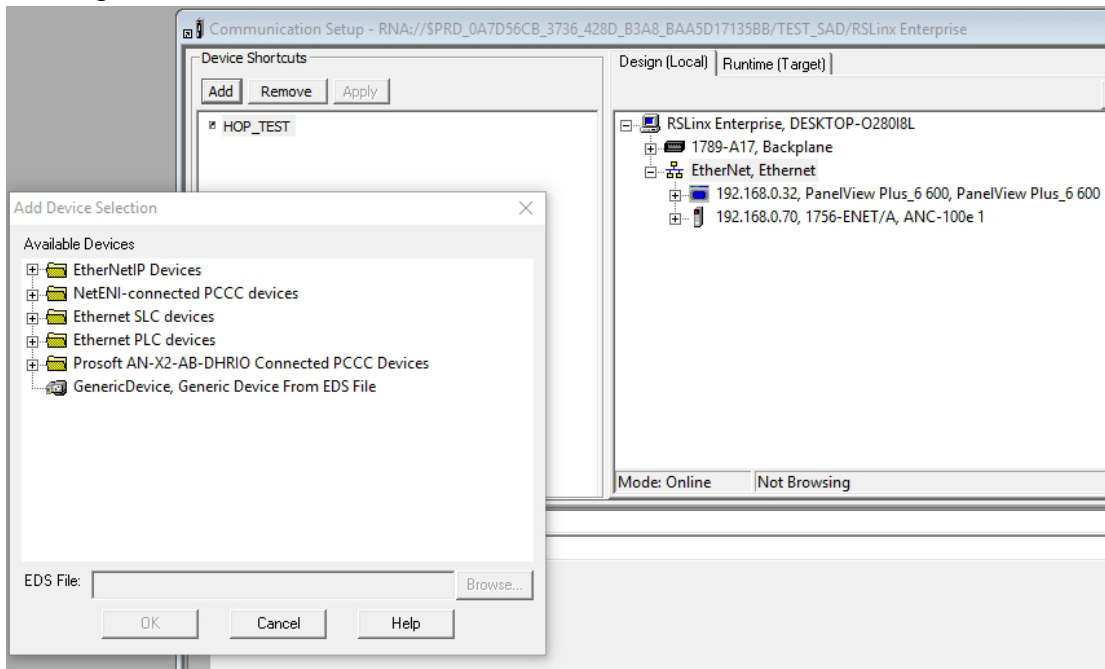


Device Settings **Change Password** **Upgrade Firmware** **Statistics** **Language**

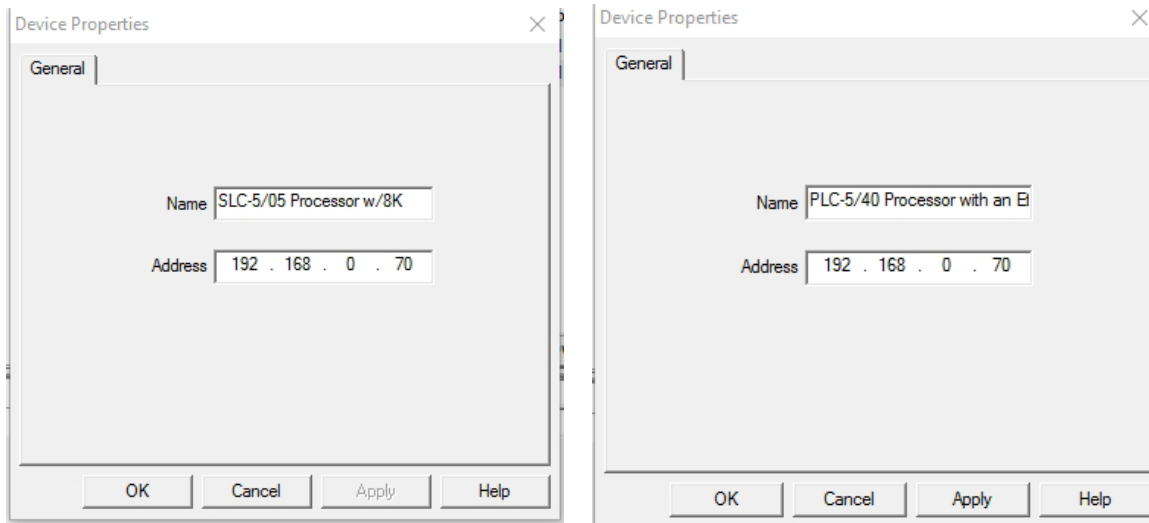
ANC-100e Device Settings:

Fw Version:	<input type="text" value="01.02.03"/>
Serial #:	<input type="text" value="110G01E002"/>
MAC Address:	<input type="text" value="70:B3:D5:2B:B0:60"/>
DHCP:	<input type="button" value="OFF"/> ▾
IP Address:	<input type="text" value="192.168.0.70"/>
IP Mask:	<input type="text" value="255.255.255.0"/>
IP Gateway:	<input type="text" value="192.168.0.1"/>
DH+ Baud Rate:	<input type="button" value="Auto"/> ▾
DH+ Node:	<input type="button" value="Auto"/> ▾
HMI:	<input type="button" value="ON"/> ▾
HMI Node:	<input type="button" value="12"/> ▾ ←
Auto Node#:	<input type="text" value="63"/>

- In the Panel View configuration, you must add a PLC or SLC device from the “Ethernet SLC devices” or “Ethernet PLC devices” folders, depending on what is the target on the DH+ network.



5. Then enter the IP address of the ANC-100e in the “Address” field



6. Using this configuration you should be able to communicate with the PLC5 or SLC500 on DH+ from your Panel View